

# Standard Package

## FiberFox MiniSeries Splicers 12R, 6S, 5C, 4S – The Most Complete Fusion Splicer Kit

**MiniSeries Splicer**  
**Precision Cleaver w/ Auto Bin**  
 Cleaver Soft Case  
**Two Battery Packs**  
**Cooling Tray**  
**Fiber Holders (2pr-250/900)**  
 Spare Electrodes (pair)

**Thermal Stripper**  
 with AC adapter, Cleaning Brush  
 3-Hole Stripper  
**Universal SOC Holder(2)**  
 SOC Heater Block  
 USB Update Cable  
 Power cord / AC Adapter

Car Charger  
 Phillips Screwdriver  
**FiberFox Splice Sleeves**  
 Yellow Hard Case w/Shoulder Strap  
 Soft Cover User Manual/CD  
 'One Tap' Cleaning Fluid  
 Lint Free Wipes

# Specifications

Splicing Method	Core Alignment AOCAT(Automatic Optical Core Analysis & Tracking System)
Average Loss	SM(0.02dB) / MM(0.01dB) / DS(0.04dB) / NZDS(0.04dB) / G.657(0.02dB)
Return Loss	>>60dB
Splice Time	12s average SM / SM 7s Quick mode
Electrode Lifespan	>3,500 arcs
Applicable Fiber	SM(ITU-T G.652, MM(ITU-T G.651), DS(ITU-T G.653), NZDS(ITU-T G.655), IT-G657A, IT-G657B, 0.25mm, 0.9mm, 2.0mm, 2.4mm, 3.0mm, FLAT(indoor cable)
Cleaved Length	Coating Diameter < 0.25mm = 8-16mm, Coating Diameter > 0.25mm = 16mm minimum
Coating Diameter	100-1,000um
Cladding Diameter	80-150um
Heating Programs	Factory installed mode : 10, User installable mode : 23
Heating Time	Typical 18s
Protection Sleeve	40mm, 60mm, SOC Connector
Data Output	Micro HDMI-USB master device
Splice Programs	Factory installed mode: 37, User installable mode: 70+
Splice Memory	Up to 2,000 records and 2,000 splice images
Battery	Typical 200 Cycles (Splice & Heat) / single battery <2 Batteries Standard>
Power Supply	AC 100-240V input or DC 9-14V
Monitor	Color 4.3" LCD monitor, with Touch Screen (Tempered Glass)
Cameras	2 CCD camera system
magnification	XY style : 150 power, X/Y : 300 power
Fiber Display	X/Y or XY, single X.Y
Weight	1.39Kg (without battery)
Size	122mm X 124mm X 138 mm
Wind Protection	The max wind speed 15m/s
Operating Environment	Elevation 0-5,000 meter, -10-50°C, 0-95% relative humidity
Storage Condition	Temperature -20 to 60°C, 0-95% relative humidity, battery -20-45°C
Pull Test	1.96~2.25N (standard)
Attenuation splicing	Range : 0.1dB ~ 20dB (0.1dB step)

# Mini 6S

The Smallest Core Alignment Splicer



# The Smallest Core Alignment Splicer

Compatible with all leading Splice-on Connectors

1.39  
kg

400  
cycles

7  
sec

0.01  
dB

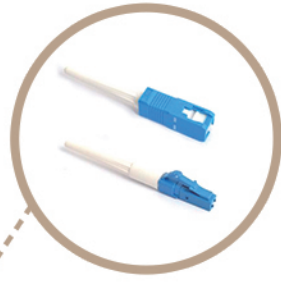
# Characteristic



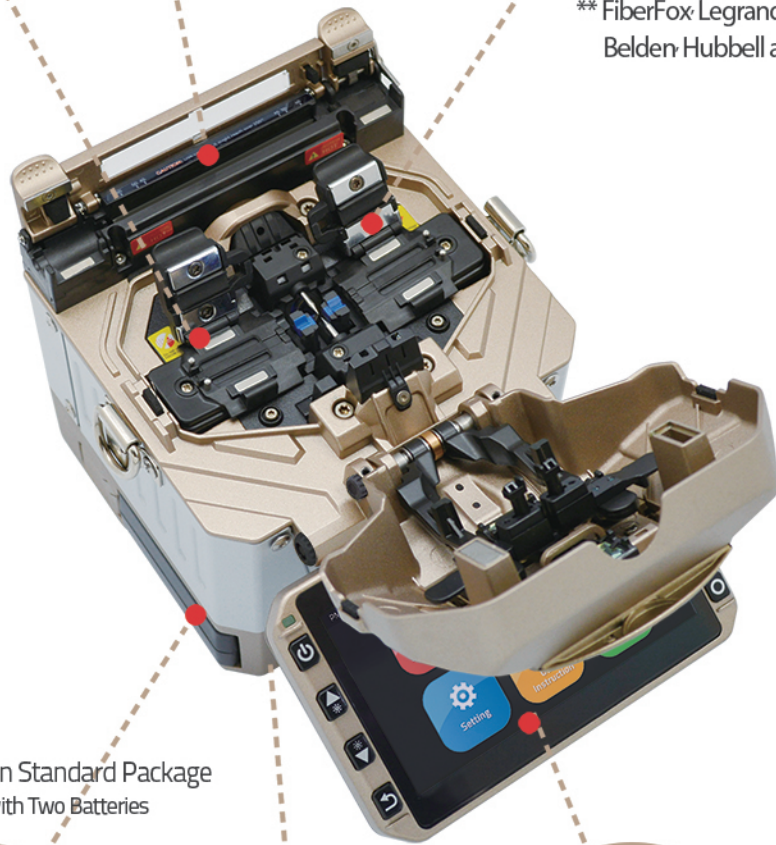
900µm fiber holder included  
250µm fiber holder included



Cooling tray included



Compatible with all leading Splice on Connectors  
\*\* FiberFox, Legrand, AFL, Sumitomo, Belden, Hubbell and more



# Mini 6S

1.39kg  
(Without Battery)

122 x 124 x 138 mm

### Industry's First!

Two Batteries are Included in Standard Package  
- 400 cycles (splicing & heating) with Two Batteries



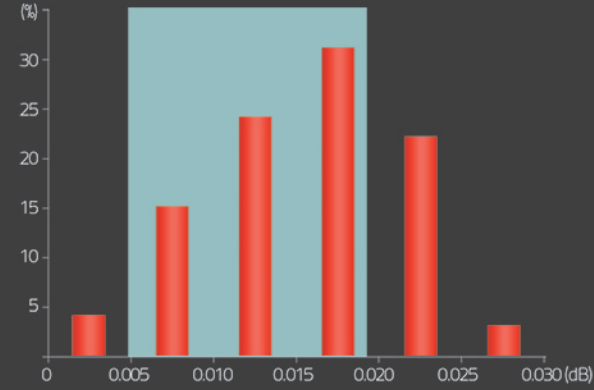
Thermal Stripper Included



Full Touch Screen  
- GUI Interface  
- Tempered Glass

# 01 Performance

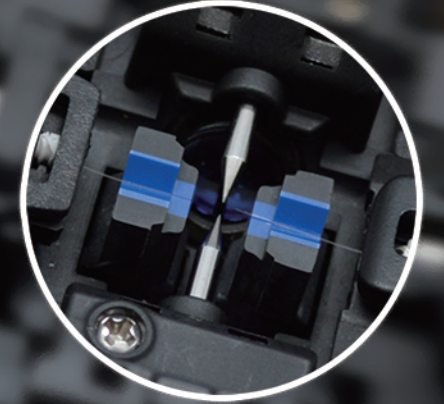
Guaranteed Stability and Splicing Performance



0.005 ~ 0.019dB : 80 (%)

# 02

The Fastest Splicing Time



7sec  
with SM fiber

# 03

Durability

1meter



Anti-shock



Dustproof

Waterproof

# 04

Reliability

Perfect performance under any environmental conditions



Temperature  
-15~60°C



relative humidity  
0~95%



Elevation  
0~5000meter



The max wind speed  
15m/s

Comply with IEC Standard